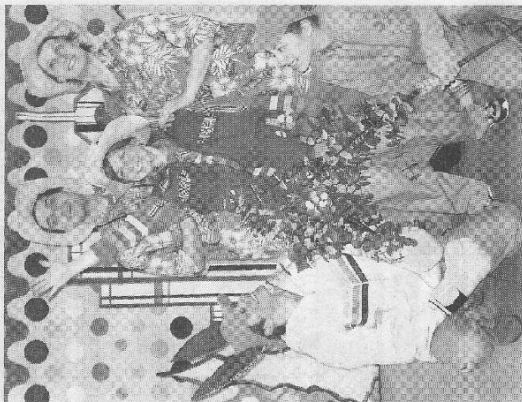


# Alexander's 'Bad Day' At Upper Darby Arts Center



The Upper Darby Performing Arts Center hosts Theatreworks USA's touring production of the children's favorite *Alexander and the Terrible, Horrible, No Good, Very Bad Day*. The musical, based on the best-selling books by Judith Viorst, tells the story of Alexander's rotten day. Laugh and sing along with Alexander's misadventures in this hilarious musical and discover along with Alexander that sometimes everyone has a terrible, horrible, no good, very bad day. The one-hour performance is 7:30 p.m. Friday, Jan. 12. Tickets are \$6-\$8. Call 610-922-1189 for tickets or information. The show is recommended for ages 5 and up. The Upper Darby Performing Arts Center is at Lansdowne Avenue and School Lane, Drexel Hill.

HEDGEROW Road

formed into Margot, an upscale, moderately priced B.Y.O.B. opening Saturday, Jan. 6. The fare will be modern-American and the atmosphere intimate and candlelit. The renovated side entrance will offer a convenient take-out/pick-up option.

The restaurant is named for owner Margot McGinley, a native Philadelphia who for the last ten years worked in finance on Wall Street and in Philadelphia, yet whose true passion has always been all things food and cooking. Margot's is at 2322 Woodbine Avenue, Narberth. For reservations, call 610-642-1024.

Carmine's will move to 818 W. Lancaster Avenue, Bryn Mawr, the space formerly occupied by Citron. Carmine's Creole Cafe Blues will continue to serve a Cajun menu but will now also offer lighter fare, a full service bar and a bar menu that features New Orleans staples.

Carmine's will also add live music five nights a week. The opening is scheduled for Thursday, Jan. 11. \* \* \*

News is welcome! Email items to: [royal@allaroundphilly.com](mailto:royal@allaroundphilly.com) or fax to Margie Royal at 610-353-5321.

Road, Newtown Square. Call 484-427-4547 for more information or visit [www.burlapandbean.com](http://www.burlapandbean.com). \* \* \*

Looking for a unique dining spot in the city? Restaurant M, 225 South Eighth Street, Phila., over looks the rear of the Reynolds-Morris House, originally constructed in 1787, and now the Morris House Hotel.

Restaurant M executive chef David Katz, serves a seasonal-based, eclectic menu. Recent creations include: Seared Scallops with roasted beets, hearts of palm and vanilla bean vinaigrette; Potato Gnocchi with spicy wild boar ragu; Soft baked Atlantic Cod with brandade, baby spinach, little neck clams and parsley jus; Sautéed Boneless Lamb Rack with saffron braised ondive, olive stuffed medjool dates and black pepper jus and Organic Potatoes; with caramelized brussel sprouts, bacon, chanterelles and mushroom sauce. Prices range between \$9-\$31. For reservations, call 215-922-2446. \* \* \*

The former Carmine's space on the Main Line in Narberth is being transformed into a different outcome with a warmer love.

*Dex and Julie Strain*, in a *Ted* features two of Philadelphia's most acclaimed performers, actress Jennifer Childs, for whom Graham scripted the role of Julie, and

**www.CountyPressOnline.com / www.AllAroundPhilly.com**  
**Focus on Dining**  
By Margie Royal

are also available, along with live musical entertainment at 8 p.m. Saturday nights. January's line up is: Jan. 6 - Tim Butler with Brad Almond; Jan. 13 - Craig Dickhaut; Jan. 20 - Dan Fisher with Bees and the Birds and Jan. 27 - Jeremy Micé. Nights, with sign-up at 7 p.m. and performances beginning at 8 p.m.  
In keeping with their community focus of giving back, the Endicotts are partners with Transfair, an organization that ensures fair compensation to coffee farmers overseas. Fair trade is something they share with their hometown of Media, which is the "World Fair Trade Town in the U.S."  
The coffee shop is open 6 a.m. to 8 p.m. Monday through Thursday; 6 a.m. to 11 p.m. Friday and 7 a.m. to 11 p.m. Saturday and is closed on Sunday.  
Burlap and Bean is at the Shoppes at Springtown Point, 214 South Newtown Street.

Classic coffee accompaniments, such as biscotti, muffins and dessert breads

# Rose Valley Playwright Graham's New Comedy Set To Premiere At The Arden



about a different outcome with a warmer love. *Dex and Julie Strain*, in a *Ted* features two of Philadelphia's most acclaimed performers, actress Jennifer Childs, for whom Graham scripted the role of Julie, and